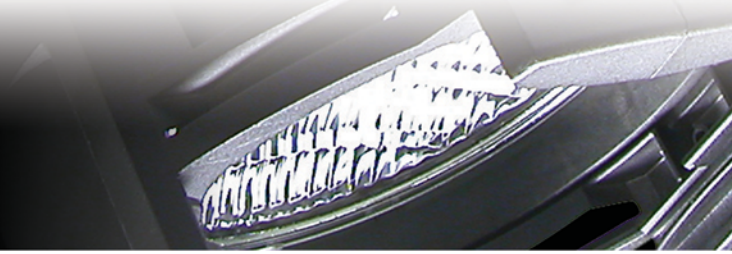




Daylight PAR



Designed primarily for tradeshow use, the Chroma-Q™ Daylight PAR™ features a 575W 6000°K hot restrike lamp with high color rendition which brings out the color of the objects it lights.

The unit is based around the rugged and familiar ETC Source 4 PAR and is supplied with color frame and a set of 4 lenses (VNSP, NSP, MFL, WFL). The integrated flicker free DMX controlled PSU enables remote on, off and dim features, making it particularly suitable for filming application and aiding lamp life. A 2200 hour lamp option is also available if required.

Key Features

- ▶ Features a 575W 6000°K hot restrike lamp with a CRI of 95 which brings out the color of the object it lights.
- ▶ Based around the rugged and familiar ETC Source 4 Par.
- ▶ Supplied with color frame and a set of lenses (VNSP, NSP, MFL, WFL).
- ▶ Integrated flicker free DMX controlled PSU enables remote on, off and lamp economy mode features, making it particularly suitable for filming application and aiding lamp life.
- ▶ 2200 hour lamp option also available if required.

Daylight PAR Specification

Product Code	CHDP	Power	100-240V, 43-63 Hz, 1150W, 1m / 3' trailing lead
Dimensions	229mm x 458mm x 327mm / 9" x 18" x 12.9"	Control	ANSI E1.1 DMX-512, XLR5 in and through
Weight	7.6kg / 17lbs	Color	Black
Beam Angle	VNSP, NSP, MFL, WFL	1200 Hour Lamp	MSR 575HR 6000°K
CRI	95	2200 Hour Lamp	MSD 575HR 6000°K

For the latest news and information on the Chroma-Q range, visit www.chroma-q.com

For more details, contact: