

Approvals & Disclaimer



The information contained herein is offered in good faith and is believed to be accurate. However, because conditions and methods of use of our products are beyond our control, this information should not be used in substitution for customer's tests to ensure that Chroma-Q products are safe, effective, and fully satisfactory for the intended end use. Suggestions of use shall not be taken as inducements to infringe any patent. Chroma-Q sole warranty is that the product will meet the Chroma-Q sales specifications in effect at the time of shipment. Your exclusive remedy for breach of such warranty is limited to refund of purchase price or replacement of any product shown to be other than as warranted.

Chroma-Q reserves the right to change or make alteration to devices and their functionality without notice due to on-going research and development.

The Chroma-Q Twin FX DMX has been designed specifically for the professional entertainment lighting industry. Regular maintenance should be performed to ensure that the products perform well in the entertainment environment.

If you experience any difficulties with any Chroma-Q products please contact your selling dealer. If your selling dealer is unable to help please contact support@chroma-q.com. If the selling dealer is unable to satisfy your servicing needs, please contact the following for full factory service:

Outside North America:

Tel: +44 (0)1494 446000

Fax: +44 (0)1494 461024

support@chroma-q.com

North America:

Tel: +1 416-255-9494

Fax: +1 416-255-3514

support@chroma-q.com

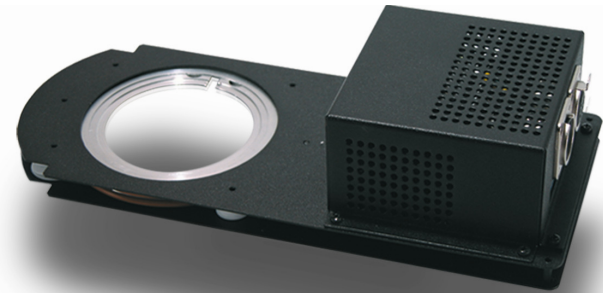
For further information please visit the Chroma-Q website at www.chroma-q.com.

Chroma-Q is a trademark, for more information on this visit www.chroma-q.com/trademarks.

The rights and ownership of all trademarks are recognised.

Quick Start Guide

Twin FX DMX



Chroma-Q™
BRILLIANT SOLUTIONS

For a full product manual please visit www.chroma-q.com

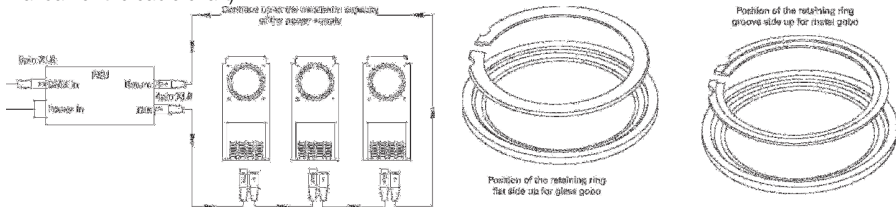
1. Overview

The Chroma-Q Twin FX DMX (Mk2) is a full-featured DMX controlled indexing gobo rotator, designed to accept any combination of two B sized metal or glass gobos, and features an advance built-in effects system.

The Chroma-Q Twin FX DMX (Mk2) is designed to operate either on the ANSI E1.1 USITT DMX512-A protocol or in stand-alone mode (without a dedicated controller). In the DMX mode, the unit is supplied power & control data by means of two 4-pin XLR style connectors on the top of the unit, allowing multiple units to be daisy-chained into the same line of cabling. The unit only requires a 24V DC to operate in stand-alone mode.

2. Control and Power Cables

Connect power & control data from the power supply unit through the XLR 4-pin cable system. Pins 2 & 3 are for ANSI E1.11 USITT DMX 512-A control protocol. Pins 1(-) & 4(+) are for 24V DC power. For daisy chaining, the XLR-4 cable should be run from the output connector on the unit to the next device in the chain. Total cable length must not exceed more than 60m/~200ft with return line. Signal input is a male XLR chassis connector & output is a female XLR chassis connector. (Refer to the Twin FX DMX User Manual for the cable chart)



3. Installation of Gobos

The unit has 2 counter-rotating gobo holders in the same axial plane. The rear gobo holder allows repeatable indexing of this gobo holder (200 steps = 360°, 1 step= 1.8°). The gobos are held firmly in place by sprung retaining rings. Both the gobo holders & rings are designed to hold metal & glass patterns. The retaining rings can be removed by placing a small tool in one of the grooves of the ring & then prying the end of the ring out of the holder. Replace the retaining rings by inserting one end of the ring into the holder & then work around pushing the rest of the ring into its slot in the holder. Check that the rings are fully seated in their slots before operating the unit.

Metal gobos: the circular indentation in the retaining ring should be facing outwards.

Glass gobos: the circular indentation in the retaining ring is used to accommodate the greater thickness of the glass gobo & therefore should be facing inwards.

4. Display Operation

Push-button Operation: red button = scroll through the different modes of operation; brown or black buttons = select the level or value in that mode. If any mode or value is changed, the display will flash until the red button is pushed to save the change.

Power-up Display: on power-up, the unit shows the DMX address mode.

Monitor Display: if left undisturbed for 5-7 sec, display will revert to 'Monitor Mode'.

Display Flip: to flip the display through 180°, press & hold the red button, then press the black button.

Display Mode to switch the default display On or Off, press the brown or black buttons once to switch between On (1) & Off (0) (the default is On). Press red to save. The display will re-activate when any button is pressed.

Reset: to reset the unit to the Factory default settings, press & hold down the red button, then press the brown button for 2 seconds.

5. Modes of Operation

Mode	Display	Display	'P' Speed	'P' Value
DMX1	CH1	Single channel DMX mode (see below)	N/A	N/A
DMX2	CH2	Dual channel DMX mode (see below)	N/A	N/A
Auto-Rotation	Rot	Gobo Rotation	Rotation speed Q (fast-slow) Rotation speed P (slow-fast)	P00-49 P50-99
Gobo Position	Gb1	Gobo position 1 (0°)	These are used to check position, alignment etc. for the '3 gobo position change' effect	Gbc
	Gb2	Gobo position 2 (120°)		
	Gb3	Gobo position 3 (240°)		
Gobo Change	Gbc	3 gobo position change (0°/120°/240°)	Step delay (≈ secs)	P00-99
Effects	Ef1	▲ (0-full speed) ◻	▲ Rate (fast-slow)	P00-99
	Ef2	'Clock Tick' ◻	Sweep size 2°-30° Sweep size (30°-2°)	P00-49 P50-00
	Ef3	▲ ◻	▲ Rate (fast-slow)	P00-99
	Ef4	Random Shimmer/Shake	Shake speed (slow-fast)	P00-99
	Ef5	'Advancing Two-Step' 50° ◻ - 30° ◻	Step speed ◻ (fast-slow) Step speed ◻ (slow-fast)	P00-49 P50-99
	Ef6	1 revolution ◻ + pause	Rotation speed ◻ (fast-slow) Rotation speed ◻ (slow-fast)	P00-49 P50-99
	Ef7	1 rev ◻ + pause + 1 rev ◻	Rotation speed ◻ (fast-slow) Rotation speed ◻ (slow-fast)	P00-49 P50-99
	Ef8	'Pendulum' (≈ ± 45° swing)	Swing speed (slow-fast)	P00-99
	Ef9	'Pendulum' (≈ ± 90° swing)	Swing speed (slow-fast)	P00-99
	Ef10	'Pendulum' (≈ ± 180° swing)	Swing speed (slow-fast)	P00-99
	Ef11	Gobo Shimmer/Shake	Shake speed (slow-fast)	P00-99
	Ef12	Gobo Shimmer/Shake -3s pause	Shake speed (slow-fast)	P00-99

Effects Menu Legend:

◻ CW rotation

◻ CCW rotation

▲ Accelerate

▼ Decelerate

Potentiometer



Single DMX Channel mode (CH1): the unit acts solely as a gobo rotator with the DMX value controlling the speed and direction of rotation.

Dual DMX Channel mode (CH2): the unit is fully controllable by DMX, offering rotation, indexing, & a large number of motion effects. The second DMX channel value sets the effect type & the first DMX channel controls the variable function of that effect. (Refer to the User Manual for the full listing of Effects)

6. Mounting

Insert unit in the gobo gate or iris slot of the lighting fixture with the control box housing facing the front of the fixture. The rotator must be correctly seated in the iris slot before powering the lighting fixture (the unit must not move sideways). The Chroma-Q Twin FX DMX is designed for mounting in an upright or side position only with the control-box housing above, or at the side of the fixture. Do not mount in an inverted position with the top control-box housing below the fixture.

Safety Wire: The Chroma-Q Twin FX DMX (Mk2) must always be used with the safety wire. There is a hole provided in the chassis for the attachment of a safety wire.

7. Further Information

Please refer to the Chroma-Q Twin FX DMX manual for more detailed information. A copy of the manual can be found at the Chroma-Q website – www.chroma-q.com – under Support.