



Chroma-Q™
BRILLIANT SOLUTIONS

Specification Sheet - Version: 1.0
Chroma-Q™ Studio Force V 48
Variable White LED Battens
Part No: CHSFV48NF

DESCRIPTION

The fixture shall provide a very powerful 16,900 hot lumens output for washing large areas.
The fixture shall be suitable for creating a wide range of lighting applications, including key-lighting, uplighting, backlighting and wash applications.
The fixture shall provide 3,000K - 6,100K CCT variable white light output.
The fixture shall provide a CRI of 80.
The fixture shall provide a smooth, linear dimming curve.
The fixture shall feature a built-in stand-alone mode.
The fixture shall feature a built-in power supply.
The fixture shall be manufactured from extruded material.

FEATURES

- 3,000K - 6,100K CCT variable white
- Extreme output - 16,900 lumens (48) / 25,400 lumens (72)
- Extremely smooth, uniform wash
- Multi-purpose
- Theatrical grade dimming
- Ideal for TV, film, touring, exhibitions, corporate events and theatre
- Choice of 1.2m / 4ft (48) and 1.8m / 6ft (72) lengths
- Camera friendly
- Laboratory calibrated 3200oK and 5600oK presets
- PowerCon input and output for easy daisy chaining of fixtures
- Optional cyc and border light lens media accessories
- Flat end plates for seamless wall-washing
- Built-in power supply
- Hidden quick release fixings
- Rugged extruded aluminium body

ORDERING INFORMATION

CHSFV48NF: Chroma-Q Studio Force V 48, body finished in black

ACCESSORIES

- CHCFCL48: Chroma-Q Cyc Lens For Force 48
CHCFBL48: Chroma-Q Border Light Lens For Force 48
CHCFHS48: Chroma-Q Half Snoot For Force 48

OVERALL SPECIFICATIONS

Net dimensions (without fixings):	Width: 1,181mm / 46.5"
	Height: 182mm / 7.25"
	Depth: 177mm / 7"
Net weight:	15kgs / 33lbs
Shipping dimensions:	Width: 1,295mm / 51"
	Height: 305mm / 12"
	Depth: 320mm / 12.5"
Shipping weight:	18kgs / 40lbs
Power supply:	Built-in
Power input rating:	100-240V AC, 50-60 Hz, 400VA
Power factor:	0.995
Power consumption:	480W
Typical power & current:	Measurements done with all LEDs at max. intensity. Measurements made at nominal voltage. Allow for a deviation of +/- 10%.
Power connector in/out:	PowerCon
Data connectors in/out:	XLR 5-pin
Control protocol:	ANSI E1.11 USITT DMX 512-A
Cooling system:	Forced - 2 fans
Operating temperature:	0°C to 40°C
Construction:	Anodised aluminium extrusion
Colour:	Black
Built in hardware:	Quick release lever for tilt adjustment
IP Rating:	IP20
Approvals:	CISPR 22 :2006/EN55022 :2006 & CISPR 24 :1997/EN55024 :1998, ICES-003 :2004 & FCC Part 15 Subpart B: 2007, Typical Power CSA C22. No. 166-M1983: R2008 UL 1573:2003; UL 8750
LED engines:	8
LEDs per engine:	12 Cold White / 12 Warm White
Total LEDs:	192
Control modes:	32 channels Dim32 3 channels FxCTI 2 channels WW/CW 2 channels CTI 1 channel Look Select Master Standalone Slave Standalone Manual Theatrical
Diming Curve:	Theatrical
Variable effects engine:	Yes
Effects parameters:	Intensity Effects
Hot Lumen output:	White 16,900 hot lumens @ 4,200K
CRI:	>80
Optics:	Specialised close focus lens
Beam angle:	~23°
Beam Angle With Optional Cyc Optic:	80 x 30° (approx.)
Beam Angle With Optional Border Optic:	60° (approx.)
Beam distribution:	Asymmetrical direct illumination
CCT:	3,000K - 6,100K
Lamp life:	L70 at 50,000 hours
Colour Gamut:	Performance enhanced



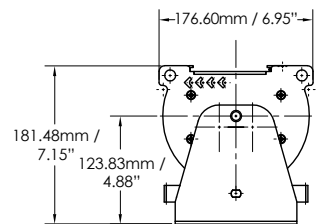
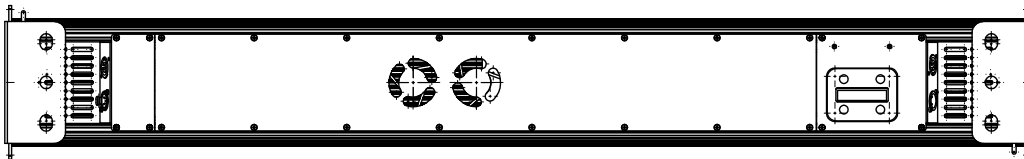
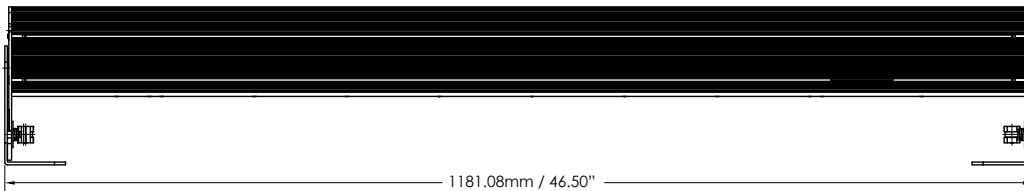
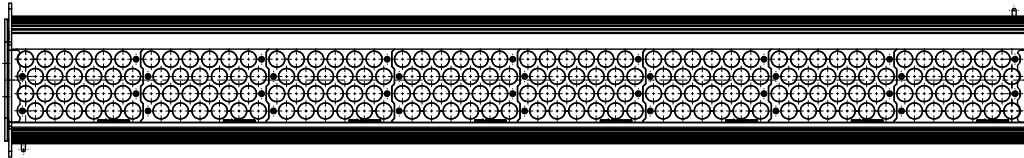
Chroma-QTM
BRILLIANT SOLUTIONS

Specification Sheet - Version: 1.0

Chroma-QTM Studio Force V 48

Variable White LED Battens

Part No: CHSFV48NF



Chroma-Q and all associated product names are recognised trademarks, for more information visit www.chroma-q.com/trademarks. The rights and ownership of all trademarks are recognised. The information contained herein is correct at the time of printing, however as we are constantly refining our product range we reserve the right to change the specification without notice. E&OE.