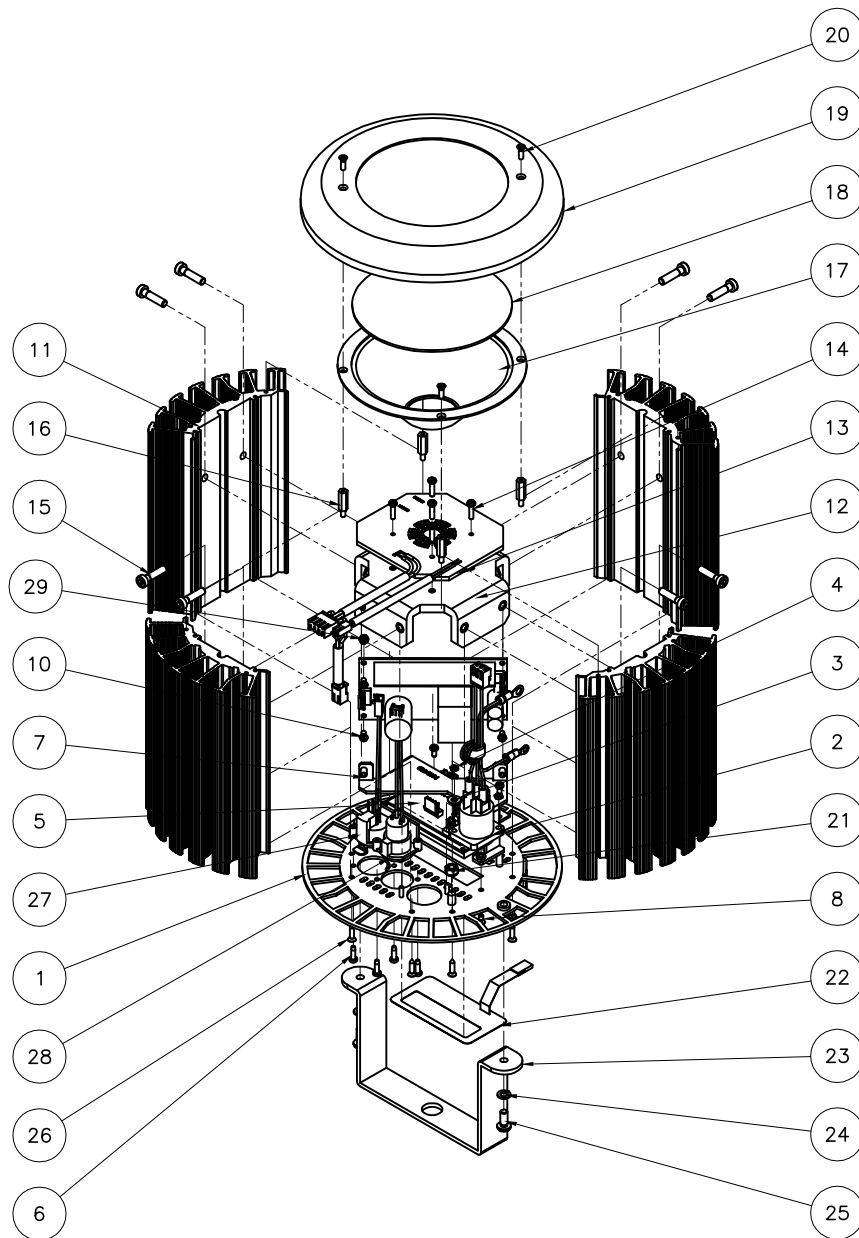


REV C

CHROMA-Q INSPIRE MINI WIDE



29	NUT HEX M3 COMBI Bk	430-3203-0	1
28	HARNESS XLR5-M	609-0007	1
27	HARNESS XLR5-F	609-0008	1
26	SCREW SELF TAP FH PZDV BLK ST2.9x13	429-6113-9	8
25	SCREW M5x12 PH PLPS BLK	450-1212-0	2
24	WASHER LOCK M5	450-2809-4	2
23	BRACKET HANDLE HOUSE LIGHT	631-0005	1
22	OVERLAY COLOR CHARGE	618-0011	1
21	NUT HEX M5 COMBI Zn	450-3205-1	1
20	SCREW M3x10 FH PLPS BLK	430-1110-0	4
19	CAP HOUSE LIGHT BLACK	632-0506	1
18	LENS WIDE FOR OP-5LW4-0456	631-0023	1
17	REFLECTOR PARABOLIC COATED	632-0527	1
16	STDOFF M-F M3x15x7, 6mm STUD	430-4115-1	4
15	SCREW M5x20 SHCS ST	450-1420-4	8
14	SCREW M3x12 PH PLPS Bk	430-1212-0	5
13	PCB COMPLETE LED RGBW INSPIRE MINI	632-0114	1
12	BRACKET PCB SUPPORT INSPIRE MINI	632-0017	1
11	EXTRUSION INSPIRE MINI BLACK DRILLED	632-0540	4
10	SCREW M3x6 PH PLPS Bk	430-1206-0	5
9	POWER SUPPLY MEANWELL EPP-100-24, 100-240VAC, 3.2A	900-2190	1
8	SCREW M3x6 FH PLPS Bk	430-1106-0	2
7	BRACKET PSU INSPIRE MINI	632-0014	1
6	SCREW M3x10 PH PLPS BLK Plastite	429-1208-9	4
5	PCB COMPLETE ADDRESSING INSPIRE MINI	632-0117	1
4	NUT HEX M2.5, 5.5mm AF, Zn PLATED	425-3102-1	2
3	WASHER FLAT M4 Zn	900-0205	1
2	HARNESS POWER IN INSPIRE MINI	632-0301	1
1	BACK PLATE HL INSPIRE ADDRESSING	632-0002	1
ITEM	DESCRIPTION	PART#	QTY

DISCLAIMER: Dimensions and illustrative drawings contained herein are accurate to the company's knowledge at the time of printing, however specifications are subject to change without notice

Parts List