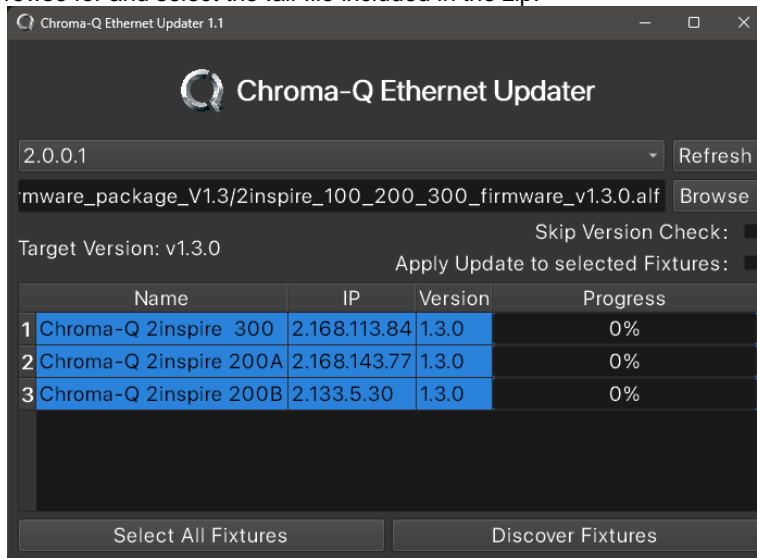


Chroma-Q Ethernet Uploader

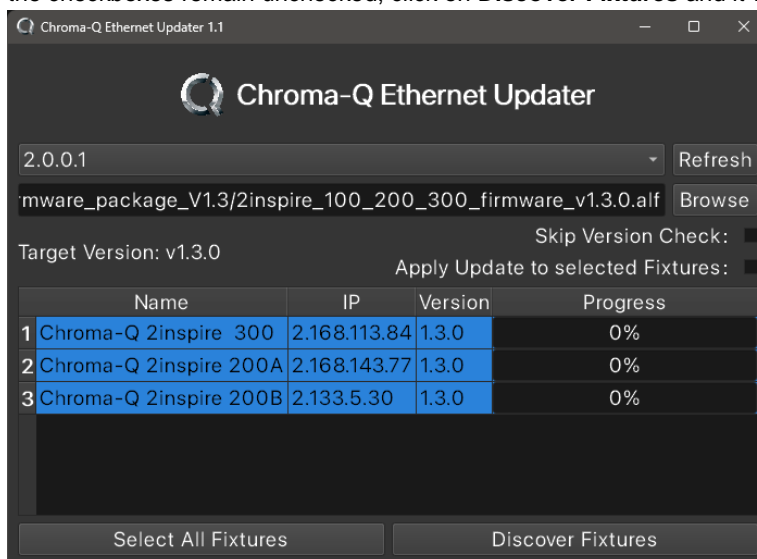
The Chroma-Q Ethernet Uploader application is designed to upload firmware to Chroma-Q Ethernet-enabled fixtures, such as the 2inspire PoE.

How to use the software:

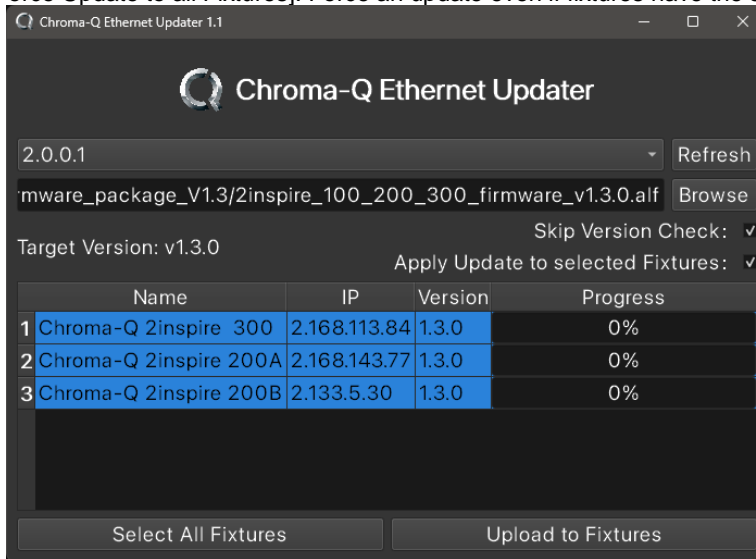
1. Unzip and install it on a Windows 10/11 PC.
2. Connect as many fixtures as your network allows.
3. Ensure **no other devices are transmitting on the network**, such as lighting consoles or software like DMXWorkshop or Luminex monitoring software.
4. The PC used must have one Ethernet port with the same IP range as the fixture(s) IP address
5. Select the appropriate NIC for transmission (the default range for fixtures is 2.x.x.x).
6. Browse for and select the .alf file included in the zip.



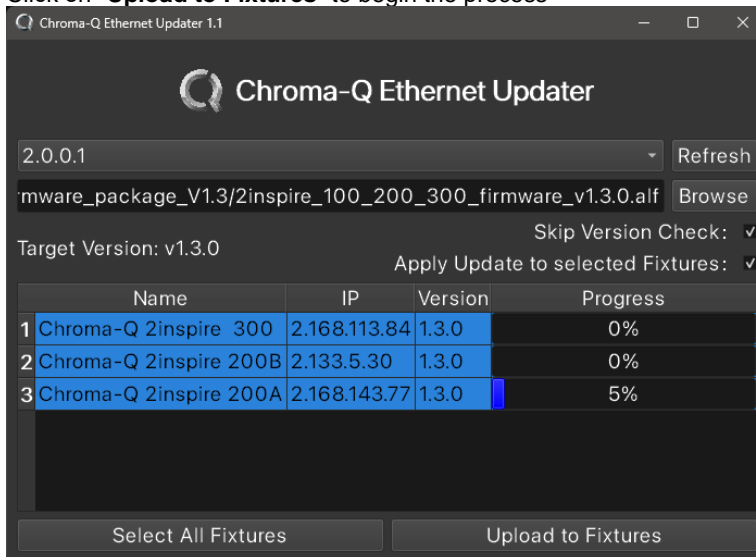
7. If the checkboxes remain unchecked, click on **Discover Fixtures** and it will list all detected fixtures.



8. [Apply Update to all Fixtures]: Firmware will be sent to all selected fixtures that need an update.
9. [Force Update to all Fixtures]: Force an update even if fixtures have the same firmware version.

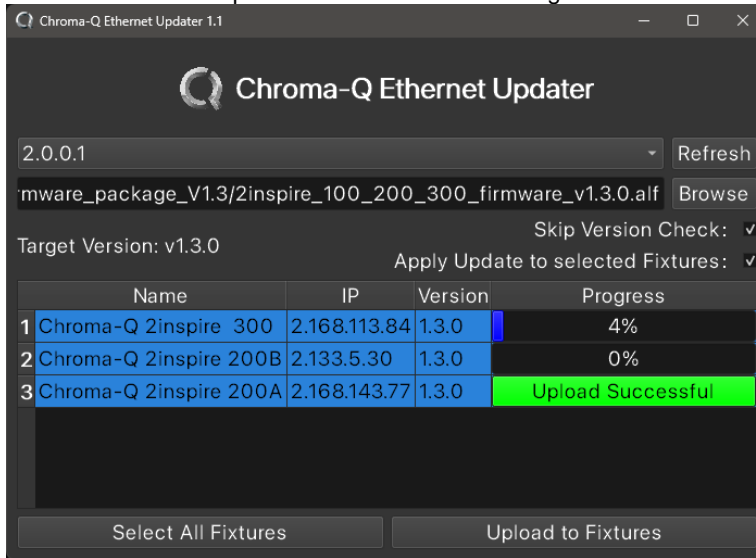


- 10.
11. Click on **"Upload to Fixtures"** to begin the process

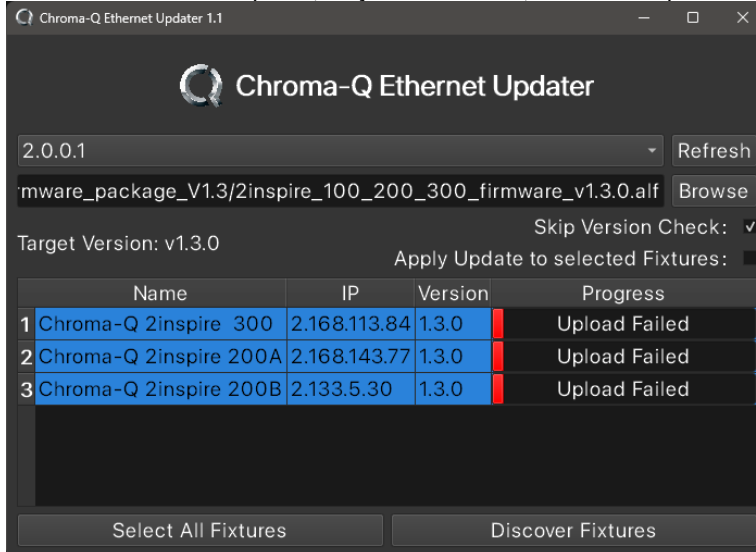


12. Fixtures will be sequentially updated.
13. Fixtures will blink blue while receiving packets and turn green once the update is completed correctly.
14. The application will display a series of – for each packet successfully sent.

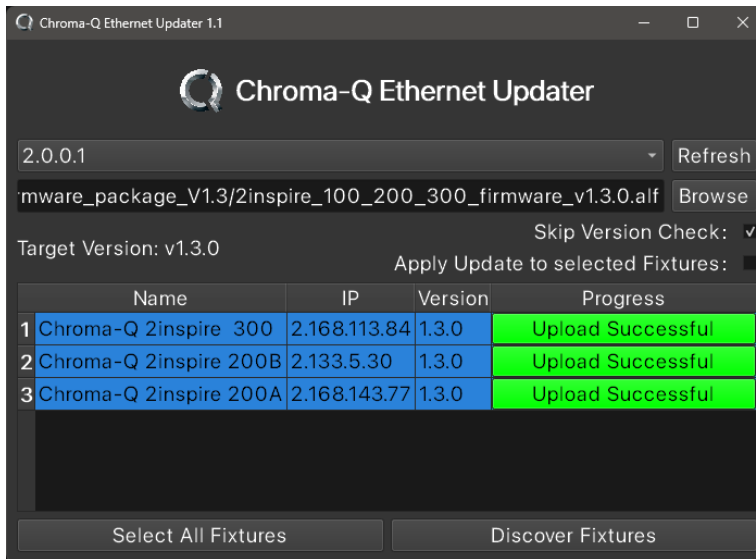
15. A successful fixture upload will finish with something like this:



16. If some fixtures fail to update, they should reboot, and a new update can be sent again.



17. In the eventuality where some fixtures would have failed to receive the new firmware, uncheck "**Force Update to all fixtures**" to send the update only to those that did not receive it in the first attempt.



18.