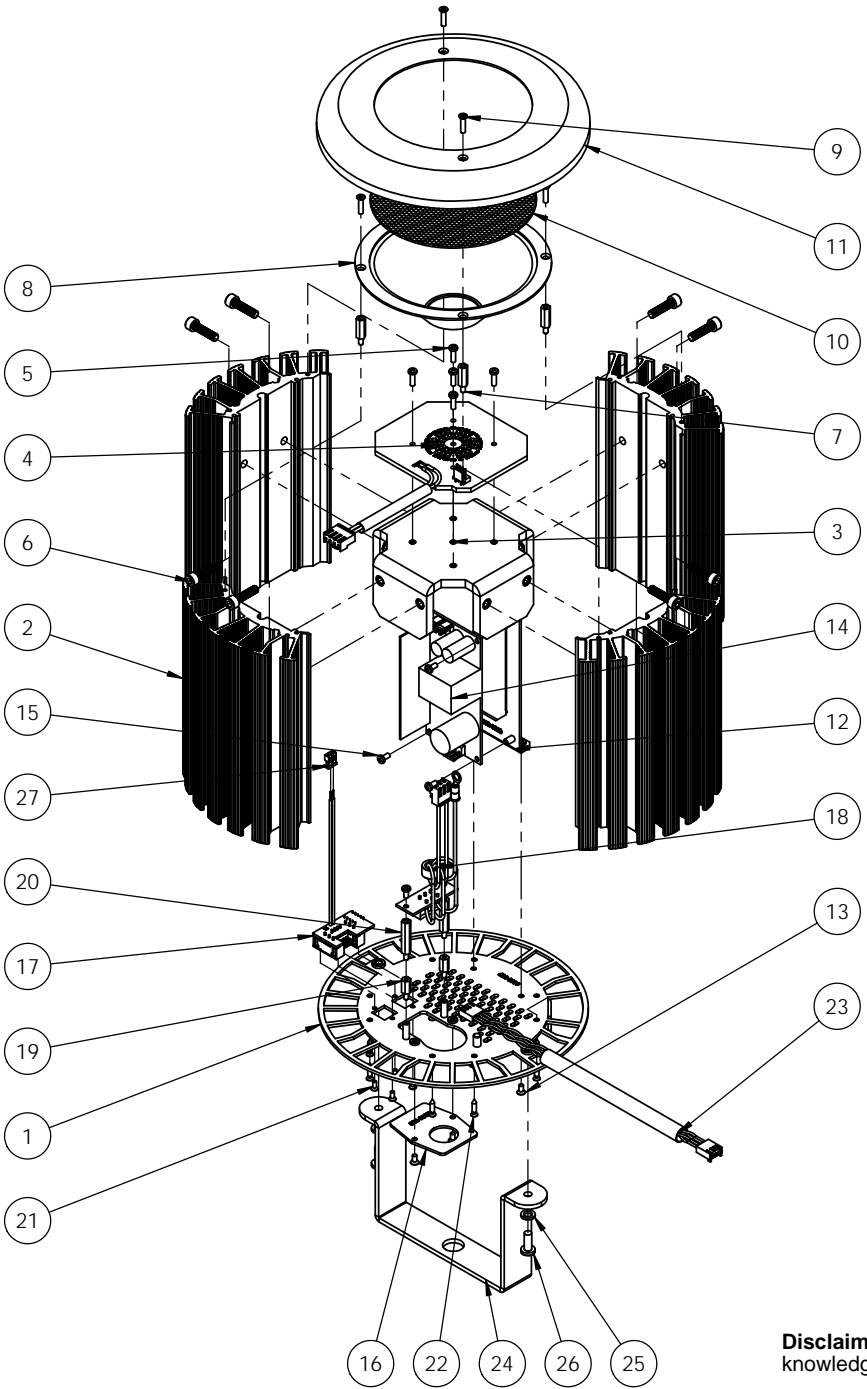


# INSPIRE MINI TERMINAL STRIP



ITEM NO.	PART NUMBER	DESCRIPTION	QTY.
1	632-0019	BACK PLATE INSPIRE MINI STRIP TERMINAL	1
2	632-0540	EXTRUSION INSPIRE MINI BLACK DRILLED	4
3	632-0017	BRACKET PCB SUPPORT INSPIRE MINI	1
4	632-0127	PCB COMPLETE LED RGBW INSPIRE MINI STRIP TERMINAL	1
5	430-1210-0	SCREW M3x10 PH PLPS BLK	5
6	450-1420-4	SCREW M5x20 SHCS ST	8
7	430-4115-1	STDOFF M-F M3x15x7, 6mm STUD	4
8	632-0527	REFLECTOR WIDE INSPIRE COATED	1
9	430-1112-0	SCREW M3x12 FH PLPS BLK	4
10	631-0023	LENS WIDE FOR OP-5LW4-0456	1
11	632-0506	CAP CLOSING INSPIRE BLK	1
12	632-0020	BRACKET PSU INSPIRE MINI STRIP TERMINAL	1
13	430-1106-0	SCREW M3x6 FH PLPS BLK	4
14	900-2190	POWER SUPPLY MEANWELL EPP-100-24, 100-240VAC, 3.2A	1
15	430-1206-0	SCREW M3x6 PH PLPS BLK	5
16	632-0007	PLATE CLOSING POWER	1
17	632-0133	PCB COMPLETE DMX IN/OUT W/CAPACITOR	1
18	632-0129	PCB COMPLETE MAINS INSPIRE MINI STRIP TERMINAL	1
19	430-4110-1	STDOFF M-F M3x10x7, 6mm STUD	2
20	430-4125-1	STDOFF M-F M3x25x7, 6mm STUD	2
21	425-1106-0	SCREW M2.5x6 FH PLPS BLK	4
22	429-6113-9	SCREW SELF TAP FH PZDV BLK ST2.9x13	8
23	632-0308	JUMPER 4PIN 9"	1
24	631-0005	BRACKET HANDLE HOUSE LIGHT	1
25	450-2809-4	WASHER LOCK M5	2
26	450-1212-0	SCREW M5x12 PH PLPS BLK	2
27	900-2191	CRIMP TERMINAL VH/NV 18-22AWG	2

**Disclaimer:** Dimensions and illustrative drawings contained herein are accurate to the company's knowledge at the time of printing, however specifications are subject to change without notice