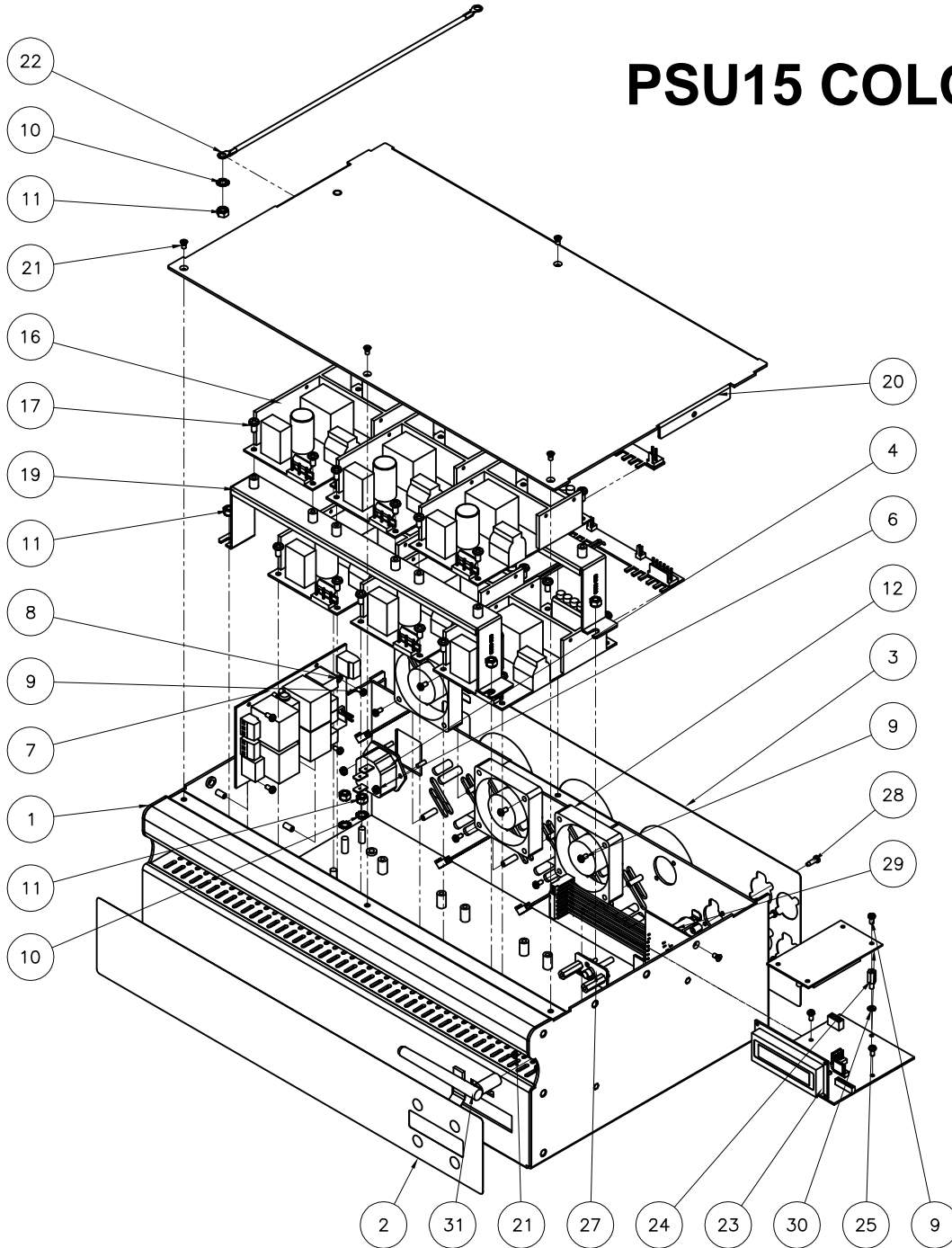


PSU15 COLOR FORCE COMPACT



37	CABLE FLAT FLEX 12POS 1MM 10"	900-2112	1
36	GROUND SCREW TERMINAL 14Ga 5"LG	100-0066	1
35	HARNESS-WHITE IEC PS06	100-0065	1
34	HARNESS-BLACK IEC PS06	100-0064	1
33	GROUND IEC PS06	100-0024	1
32	PCB INTERCONNECT LEVEL 2	636-0008	1
31	ANTENNA RF OMNI 2DBI RP-SMA MALE	900-2070	1
30	WASHER LOCK M3 BLK	430-2806-4	1
29	PCB COMPLETE XLR'S COMPACT PSU	636-0009	1
28	SCREW M3x10 PH PLPS BLK PLASTITE	429-1208-9	10
27	S/A ANTENNA BRACKET	636-0019	1
25	W-DMX MICRO G4	900-2072	1
24	STD OFF HEX M3x10 M-F NYLON	900-0345	1
23	PCB COMPLETE ADDRESSING COMPACT PSU	636-0013	1
22	GROUND CHASSIS TO COVER PSU-08	139-0013	1
21	SCREW M3x6 FH PLPS BLK	430-1106-0	8
20	COVER PSU15 FORCE COMPACT	636-0002	1
19	BRACKET PSU FORCE COMPACT PSU15	636-0003	2
18	PCB INTERCONNECT LEVEL 1	636-0007	1
17	SCREW M4x8 PH PLPS BLK	440-1208-0	24
16	POWER SUPPLY 48V 150W SCREW TERM	900-2108	6
15	HARNESS-WHITE IEC PS06	100-0065	1
14	HARNESS-BLACK IEC PS06	100-0064	1
13	GROUND IEC PS06	100-0024	1
12	FAN ASSY 1X 60x60	900-1203	3
11	NUT HEX M5 COMBI Zn	450-3205-1	7
10	WASHER LOCK M5 EXT TOOTH Zn	450-2609-1	3
9	SCREW M3x6 PH PLPS BLK	430-1206-0	13
8	WASHER LOCK M3 EXT TEETH	430-2606-4	1
7	PCB COMPLETE FILTER COMPACT PSU	636-0010	1
6	NUT HEX M3 COMBI Bik	430-3203-0	2
5	FUSE 12.5A (T)	900-0959	4
4	IEC FUSED INLET	900-0824	1
3	OVERLAY BACK PSU COMPACT	636-0014	1
2		636-0011	1
1	CHASSIS PSU15 FORCE COMPACT	636-0001	1
ITEM	DESCRIPTION	PART#	QTY

Parts List

DISCLAIMER: Dimensions and illustrative drawings contained herein are accurate to the company's knowledge at the time of printing, however specifications are subject to change without notice