

# Chroma-Q™

## Color Block™ DB4

User Manual



**Chroma-Q™**  
BRILLIANT SOLUTIONS

Version 1.2 September 2012

PN: 602-0500



## Warranty Statement

Chroma-Q warrants to the original purchaser, with proof of purchase, that its delivered products shall be free from defects in material and workmanship under normal use for a period of 12 months from date of shipment.

Chroma-Q will repair, or at its option, provide an equivalent item or replace, the defective product during the stated warranty period. This warranty applies only to the repair or replacement of the product and only when the product is properly handled, installed and maintained according to Chroma-Q instructions. This warranty excludes defects resulting from improper handling, storage, installation, acts of God, fire, vandalism or civil disturbances. Purchaser must notify Chroma-Q in writing within 14 days of noticing the defect. This warranty excludes field labour or service charges related to the repair or replacement of the product.

The warranty contained herein shall not extend to any finished goods or spare parts from which any serial number has been removed or which have been damaged or rendered defective (a) as a result of normal wear and tear, willful or accidental damage, negligence, misuse or abuse; (b) due to water or moisture, lightning, windstorm, abnormal voltage, harmonic distortion, dust, dirt, corrosion or other external causes; (c) by operation outside the specifications contained in the user documentation; (d) by the use of spare parts not manufactured or sold by Chroma-Q or by the connection or integration of other equipment or software not approved by Chroma-Q unless the Customer provides acceptable proof to Chroma-Q that the defect or damage was not caused by the above; (e) by modification, repair or service by anyone other than Chroma-Q, who has not applied for and been approved by Chroma-Q to do such modification, repair or service unless the Customer provides acceptable proof to Chroma-Q that the defect or damage was not caused by the above; (f) due to procedures, deviating from procedures specified by Chroma-Q or (g) due to failure to store, install, test, commission, maintain, operate or use finished goods and spare parts in a safe and reasonable manner and in accordance with Chroma-Q's instructions (h) by repair or replacement of engines without factory training.

The warranty contained herein shall not apply to finished goods or spare parts which are sold "as is", as "second-hand", as used", as "demo" or under similar qualifications or to Consumables ("Consumables" is defined as any part(s) of goods or part(s) for use with goods, which part(s) of goods or part(s) for use with goods are consumed during the operation of the goods and which part(s) of goods or part(s) for use with goods require replacement from time to time by a user such as, but not limited to, light bulbs).

The warranty contained herein shall not apply, unless the total purchase price for the defective finished goods or spare parts has been paid by the due date for payment.

The warranty contained herein applies only to the original purchaser and are not assignable or transferable to any subsequent purchaser or end-user.

This warranty is subject to the shipment of the goods, within the warranty period, to the Chroma-Q warranty returns department, by the purchaser, at the purchasers expense. If no fault is found, Chroma-Q will charge the purchaser for the subsequent return of the goods.

Chroma-Q reserves the right to change the warranty period without prior notice and without incurring obligation and expressly disclaims all warranties not stated in this limited warranty.

## Disclaimer

The information contained herein is offered in good faith and is believed to be accurate. However, because conditions and methods of use of our products are beyond our control, this information should not be used in substitution for customer's tests to ensure that Chroma-Q products are safe, effective, and fully satisfactory for the intended end use. Suggestions of use shall not be taken as inducements to infringe any patent. Chroma-Q sole warranty is that the product will meet the sales specifications in effect at the time of shipment. Your exclusive remedy for breach of such warranty is limited to refund of purchase price or replacement of any product shown to be other than as warranted.

The colour of the extrusion and the colour of the end plates and feet might be slightly different because of the difference in the alloy material and the grain finish of the metal of the extrusion and the metal end plates and feet. This is valid for any colour including clear anodising/silver.

Chroma-Q reserves the right to change or make alteration to devices and their functionality without notice due to our on going research and development.

The Color Block DB4 has been designed specifically for the professional entertainment lighting industry. Regular maintenance should be performed to ensure that the products perform well in the entertainment environment.

If you experience any difficulties with any Chroma-Q products please contact your selling dealer. If your selling dealer is unable to help please contact [support@chroma-q.com](mailto:support@chroma-q.com). If the selling dealer is unable to satisfy your servicing needs, please contact the following, for full factory service:

<b>Outside North America:</b>	<b>North America:</b>
Tel: +44 (0)1494 446000	Tel: 416-255-9494
Fax: +44 (0)1494 461024	Fax: 416-255-3514
<a href="mailto:support@chroma-q.com">support@chroma-q.com</a>	<a href="mailto:support@chroma-q.com">support@chroma-q.com</a>

For further information please visit the Chroma-Q website at [www.chroma-q.com](http://www.chroma-q.com).

Chroma-Q is a trademark, for more information on this visit [www.chroma-q.com/trademarks](http://www.chroma-q.com/trademarks).

The rights and ownership of all trademarks are recognised.

# Table of Contents

1.	Product Overview	.....	4
2.	Operation	.....	4
2.1	Cabling	.....	5
2.2	Fixings	.....	5
	a. Integrated Connection system	.....	5
	b. Batten bracket kit for up to five fixtures	.....	6
	c. Yoke kit for single fixture	.....	6
	d. Blinder frame for four fixtures	.....	7
	e. Hinge kit	.....	7
	f. Wall bracket for single fixture	.....	7
2.3	Control	.....	8
	a. HIS v RGB	.....	8
	b. Internal FX engine	.....	8
2.4	Technical Information	.....	9
	a. Specification	.....	9
	b. Photometric performance	.....	9
	c. Maintenance	.....	9
	d. Accessories	.....	10

## 1. Product overview

The Color Block DB4 lighting fixture is designed specifically for professional entertainment lighting. The fixture's modular design and comprehensive range of fixing options allows users to easily create a complete LED system using stock of just one generic fixture type - including battens, blinders, truss toners and various mounting configurations using the built in fixings.

Each Color Block DB4 fixture features four sets of three high output LEDs which produce an intense, powerful light and vibrant colours across the spectrum.

A range of optical accessories are available to increase the flexibility of the fixture. From beam angle adjustment for projection to Pixel Caps and Light Pipe to create stunning visual effects.

Designed to be intelligent both inside and out, the modular blocks incorporate the latest Hue, Saturation and Intensity (HSI) control as well as RGB, and Variable Effects Engine software which gives the lighting designer full control over colour and effects combinations.

The product's lightweight yet robust, heavy gauge aluminium extruded construction houses a discreet cable management system and additional protection is built around the LED lenses for a truly road proof fixture.

A range of DMX controlled power supplies are available to accommodate most applications. Each Color Block Power Supply features XLR4 outputs with a maximum capacity of 5 Color Block fixtures daisy chained together. See separate PSU user manual for control details.



## 2. Operation

### 2.1 Cabling

### 2.2 Fixing

- a. Integrated connection system
- b. Batten bracket kit for up to five fixtures
- c. Yoke kit for single fixture
- d. Blinder frame for four fixtures
- e. Hinge kit
- f. Wall bracket for single fixture

### 2.3 Control

- a. HIS v RGB
- b. Internal FX engine

### 2.4 Technical information

- a. Specification
- b. Photometric performance
- c. Maintenance
- d. Accessories

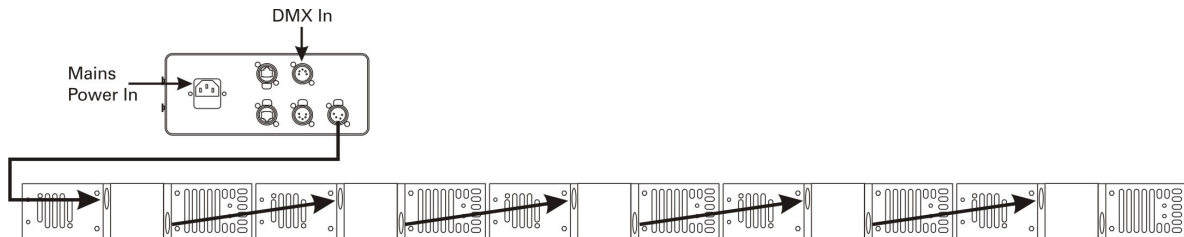
## 2.1 Cabling

The Color Block utilises an XLR 4-pin cable system. This is used to supply power and control data. Pin 1 = 0VDC, pin 2 = control minus, pin 3 = control plus, pin 4 = +48VDC. The chassis should be ground bonded.

Only genuine Tourflex Datasafe cable is recommended for use with the Color Block system. Damage will occur if power connections short-circuit to data or ground shield connections. When assembling XLR4-pin cables, heat shrink should be used on each individual data pin and the drain wire to prevent short circuits.

The Color Block power supplies deliver power and data via XLR4. A maximum of five daisy-chained Color Block DB4 fixtures can be connected to one cable. Return lines are **not** required. The total cable length of each chain must not exceed 60 meters (200ft).

It is recommended that a maximum 20m XLR4 cable length separates adjacent units as this can cause signal deterioration.



**Note:** Maximum of 5 Color Block fixtures per cable. No return cables required.

## 2.2 Fixings

One of the strengths of the Color Block fixture is its flexible fixing possibilities. The Color Block fixture is supplied with an integral M10 clinch nuts at each end. These can be used to attach the Color Block fixture to a standard hook clamp or the wide range of Color Block below.

**Note:** damage may occur if the bolt is too long. In addition both sides of the fixture feature a fixing slot designed to accept an M6 bolt head.

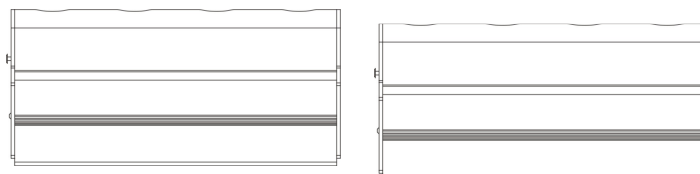
The Color Block fixture also features an integral connection system to enable up to five units to be locked together as a batten (see below).

**Note:** it is important to ensure that each fixture is also secured with a safety bond. The end plate of each fixture has a fixing hold to facilitate secondary fixings.

### a. Integrated connection system

One end of the Color Block fixture features two protruding locating pins and a catch plate, the other end has two keyhole slots and a butterfly latch.

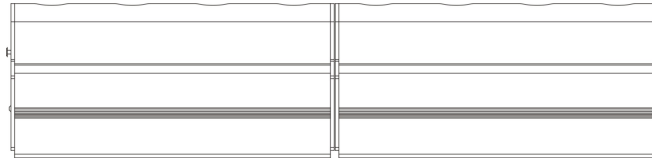
1. To connect two fixtures together, firstly mate the two protruding pins from one fixture into the keyhole slots of the other.



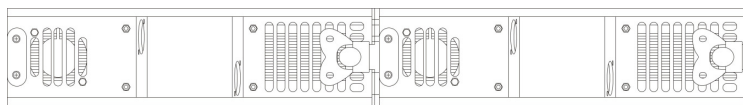
[www.chroma-q.com](http://www.chroma-q.com)

- Then slide the fixtures together so that they are aligned correctly, taking care to get past the extended catch plate.

**Note:** This will be stiff on new fixtures and a twisting action may ease assembly.



- Finally use the butterfly latch to secure the fixtures together tightly (maximum 5 units together).



**Note:** It is important to ensure adequate ventilation to the rear of all colour block fixtures. Never place the fixtures directly on the floor pointing upwards when configured as a batten.



The Color Block fixture is supplied with an integral M10 clinch nuts at each end. These can be used to attach the Color Block fixture to a standard hook clamp.

**Note:** damage may occur if the bolt is too long.

#### b. Batten bracket kit for up to five fixtures

The batten bracket set is supplied as a pair of brackets with fibre washers and thumb wheels.

The batten bracket set can be used for floor mounting (see photo), direct wall mounting and truss mounting when used in conjunction with hook clamps or half couplers.



#### c. Yoke kit for single fixture

The yoke kit for single fixture is supplied as a yoke bracket with fibre washers and thumb wheels.

The yoke kit can be used for floor mounting (see photo), direct wall mounting and truss mounting when used in conjunction with hook clamps or half couplers.



**d. Blinder frame for four fixtures**

The blinder frame is supplied as a yoke bracket, side plates, fibre washers, thumb wheels and eight M10 bolts.

The blinder frame is designed to truss mount with use of a half coupler.

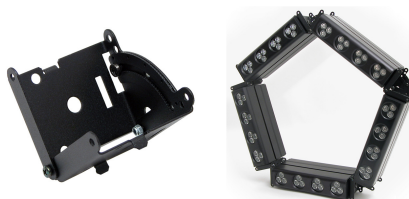
The end plates feature two complete sets of fixture fixing holes. Set one hold the fixtures closely together ensuring equal centres for all sixteen cells. Sets two are adjustable and allow the Color Block fixtures to be splayed out at varying angles.



**e. Hinge kit**

The hinge kit is supplied as one complete hinge with fibre washers and M10 bolts.

The hinge kit fits between two Color Block fixtures and offers an angle adjustment of 180 deg. If used in multiples, unique shapes can be achieved, such as hexagons, octagons etc.



**f. Wall bracket for single fixture**

The Wall bracket for single fixture is a discrete fixing suitable for fixing a single Color Block to a wall or set piece. Keyhole slots are provided to for vertical or horizontal fixing.





## 2.3 Control

The Color Block is controlled via an addressable ANSI E1.11 USITT DMX512-A power supply. The Color Block power supplies can be set to operate in various modes. We offer 3 grouping options (individual, block, all) with 3 control options on each (FX, HSI & RGB) see relevant power supply user manual for full details.

### PSU-05

Mode 1 (67ch) - Cell grouped, 20 x HSI + FX

Mode 2 (60ch) - Cell grouped, 20 x HSI

Mode 3 (60ch) - Cell grouped, 20 x RGB

Mode 4 (21ch) - Block grouped, 5 x HSI + FX

Mode 5 (15ch) - Block grouped, 5 x HSI

Mode 6 (15ch) - Block grouped, 5 x RGB

Mode 7 (9ch) - All grouped, HSI + FX

Mode 8 (3) - All grouped, HSI

Mode 9 (3) - All grouped, RGB

### PSU-30

Mode 1 (367ch) - Cell grouped, 120 x HSI + FX

Mode 2 (360ch) - Cell grouped, 120 x HSI

Mode 3 (360ch) - Cell grouped, 120 x RGB

Mode 4 (96ch) - Block grouped, 30 x HSI + FX

Mode 5 (90ch) - Block grouped, 30 x HSI

Mode 6 (90ch) - Block grouped, 30 x RGB

Mode 7 (9ch) - All grouped, HSI + FX

Mode 8 (3) - All grouped, HSI

Mode 9 (3) - All grouped, RGB

#### a. HSI v RGB

The Color Block has two methods of controlling colour and intensity:

**3 channel HSI** (Hue, Saturation and Intensity) gives 2 colour channels for hue and saturation and a separate intensity channel. A separate definable intensity channels is particularly useful when creating intensity chases or when the grand master is used. The hue channel has 255 different colours available and the saturation channel specifies the saturation level of that colour. The saturation channel is fully saturated at full. White is achieved with the intensity channel to full and the saturation channel at zero.

**3 channel RGB** (Red, Green and Blue) is the more traditional way of controlling colour changing LED fixtures. Each of the three control channels directly affects the intensity of the corresponding LED. Colour is mixed by adjusting the levels of the three primary colours. White is achieved with all channels at full.

#### b. Internal FX engine

The Color Block PSUs feature a comprehensive internal FX engine with seven variable parameters to create an unlimited amount of unique lighting effects. The PSU User Manuals have a comprehensive section describing the functionality in detail. Here is a brief channel description for mode 1:

**Ch1 - Grouping**, variable grouping facility to run FX between / within groups

**Ch2 - Colour Speed**, variable speed of colour scrolling

**Ch3 - Colour Fan**, variable fan of colour between / within groups

**Ch4 - Colour Range**, variable limit of spectrum range for colour scrolling

**Ch5 - Colour Step**, variable control of smoothness of colour scrolling

**Ch6 - Intensity Effects**, wide selection of intensity fading and snapping effects

**Ch7 - Intensity Fan**, variable fan of intensity effects

All internal FX are referenced back to the group base HSI colour and intensity levels.

## 2.4 Technical

### a. Specifications

Product Code:	CHCB4
Dimensions (without fixings):	250mm × 62mm × 117mm 9.8" × 2.4" × 4.6"
Weight:	1.4kg / 3.1lbs
Connectors:	XLR4
Body colour:	Black anodised
LED heads:	4 × 3 RGB
Lamp life:	Up to 25,000 hours
Beam dispersion:	14° (20°, 30° & 60×10% optional)
IP Rating:	IP20
Operating temperature:	0° C to + 40° C
Approvals:	EN55103-1, EN55103-2, IEC60950



### b. Photometric performance

Photometric data for colour white

	3'/1m	6'/2m	9'/3m	12'/4m	15'/5m
FC	276.0	84.5	39.6	22.1	14.0
Lux	2970.5	909.5	425.8	238.0	151.0

Photometric data for colour red

	3'/1m	6'/2m	9'/3m	12'/4m	15'/5m
FC	77.9	23.8	11.2	6.2	4.0
Lux	838.3	256.3	120.8	66.7	42.7

Photometric data for colour green

	3'/1m	6'/2m	9'/3m	12'/4m	15'/5m
FC	182.4	55.5	25.8	14.4	9.2
Lux	1963.3	597.8	277.3	155.0	98.9

Photometric data for colour blue

	3'/1m	6'/2m	9'/3m	12'/4m	15'/5m
FC	28.8	9.5	4.5	2.6	1.6
Lux	310.0	102.0	48.5	27.6	17.7

### c. Maintenance

With care the Color Block DB4 will require little maintenance. However, as the unit is likely to be used in a stage environment we recommend periodical internal inspection and cleaning of any resulting dust and cracked oil residue.

If the Color Block DB4 requires cleaning, wipe with a mild detergent on a damp soft cloth. Do not spray liquids onto the enclosure.

#### d. Accessories

CHCBSY	Yoke attachment
CHCBB	Batten bracket kit for up to 5 DB4s
CHCBBF4	Blinder frame for 4 DB4s
CHCBC90	90° mitre corner
CHCBHP	Hinge kit
CHCBWB	Wall bracket for single DB4
CHCBLP250	250mm LED pipe
CHCBLP1300	1300mm LED pipe
CHCBPC	Set of 4 pixel caps and bracket for 1 DB4
CHCBBK20	20° beam kit for Color Block
CHCBBK30	30° beam kit for Color Block
CHCBBK6010	60 × 10° beam kit for Color Block
MUCX4-27	Single link cable for use in battens

#### Set of 4 pixel caps and bracket



The pixel caps are supplied in a set of 4 with a quick release mounting bracket. The caps blend and diffuse the RGB LED output of a single cell taking the resulting colour.

#### LED Pipe



The LED pipe is available in 250mm and 1300mm lengths and simply snaps into the fixing slots on the fixture body. The LED pipe blends and diffuses the RGB LED output of adjacent cells, taking the resulting colour. The LED pipe is particularly effective at linear colour chase effects.